
NOTICE OF CONSTRUCTION START-UP (2026 CONSTRUCTION SEASON)

Distribution Date: April 2, 2026

In coordination with the Ministry of Transportation and the City of Ottawa, the Kiewit Dufferin Midtown Partnership (KDMP) will be resuming construction on the Highway 417 Rapid Bridge Replacement (RBR) project (the “Midtown” project) on April 13, 2026.

Active construction will resume on Highway 417 from Island Park to Kent Street. Work planned for 2026 will include the replacement of noise barrier wall along Highway 417, in addition to other improvements to the highway and surrounding city streets.

To facilitate this work, KDMP will implement traffic control staging on Highway 417 and City of Ottawa streets between Island Park and Kent Street. It is KDMP’s intent to keep an open and upfront communication channel with all residents and business owners. To that end, further notices will be distributed throughout the course of the project which will provide updates regarding any specific lane or ramp closures and/or other impacts that may affect you directly.

More information can be found on the project website at <http://hwy417bridgereplacements.ca/>

2026 CONSTRUCTION SEASON:

WHERE: Over the course of the 2026 construction season, work will be ongoing at the following locations:

- Highway 417 Eastbound from Island Park to Kent Street
- Highway 417 Westbound from Kent Street to Island Park
- City streets approximately 50 m north and south of the highway

WHEN: From April 13, 2026 to Late Summer

WHY: To facilitate noise barrier replacement and other improvements along Highway 417 from Island Park to Kent Street.

WHAT: Highway 417 Eastbound Lane 4 (rightmost lane) will be closed from Carling Avenue to the Rochester Avenue off-ramp during this period.

Highway 417 eastbound and westbound temporary lane closures, Ramp closures and traffic staging will be in effect between Island Park Drive and Kent Street.

The scope of 2026 construction includes, but is not limited to:

- Tree clearing and grubbing
- Concrete retaining wall resurfacing
- Excavation and removals
- Concrete barrier wall improvements

**KIEWIT DUFFERIN MIDTOWN PARTNERSHIP
HIGHWAY 417 FROM ISLAND PARK DRIVE TO KENT STREET
MTO CONTRACT NO. GC 2020-4075**



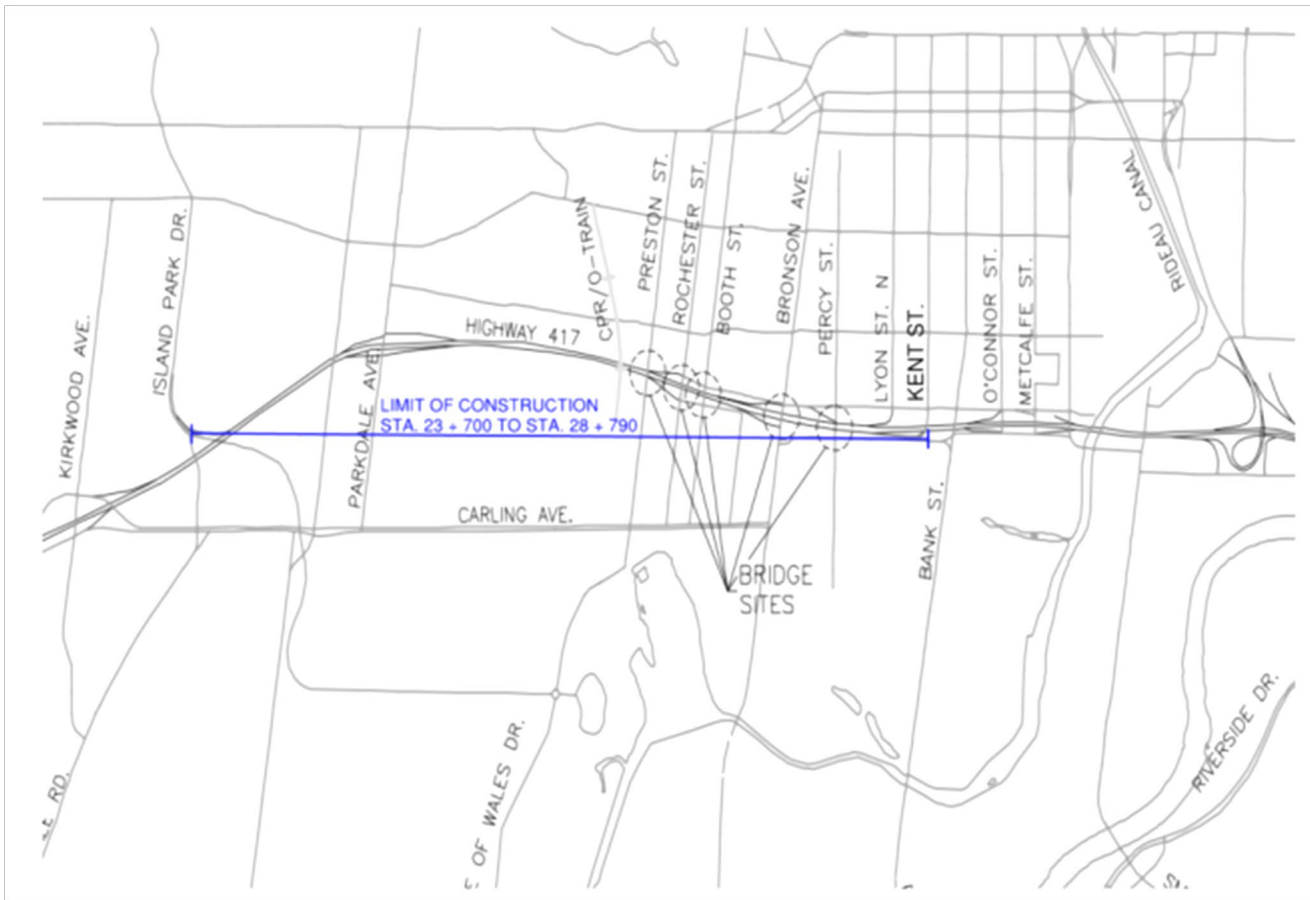
- Electrical work
- Drainage improvements
- Noise barrier replacement
- Guiderail replacement
- Curb replacement
- Asphalt paving
- Line painting
- Deficiency repairs

CONTACT US: For any questions, please contact Ahmad Almufleh, Stantec's Contract Administrator at (613) 608-7530 or by email at ahmad.almufleh@stantec.com

**KIEWIT DUFFERIN MIDTOWN PARTNERSHIP
HIGHWAY 417 FROM ISLAND PARK DRIVE TO KENT STREET
MTO CONTRACT NO. GC 2020-4075**



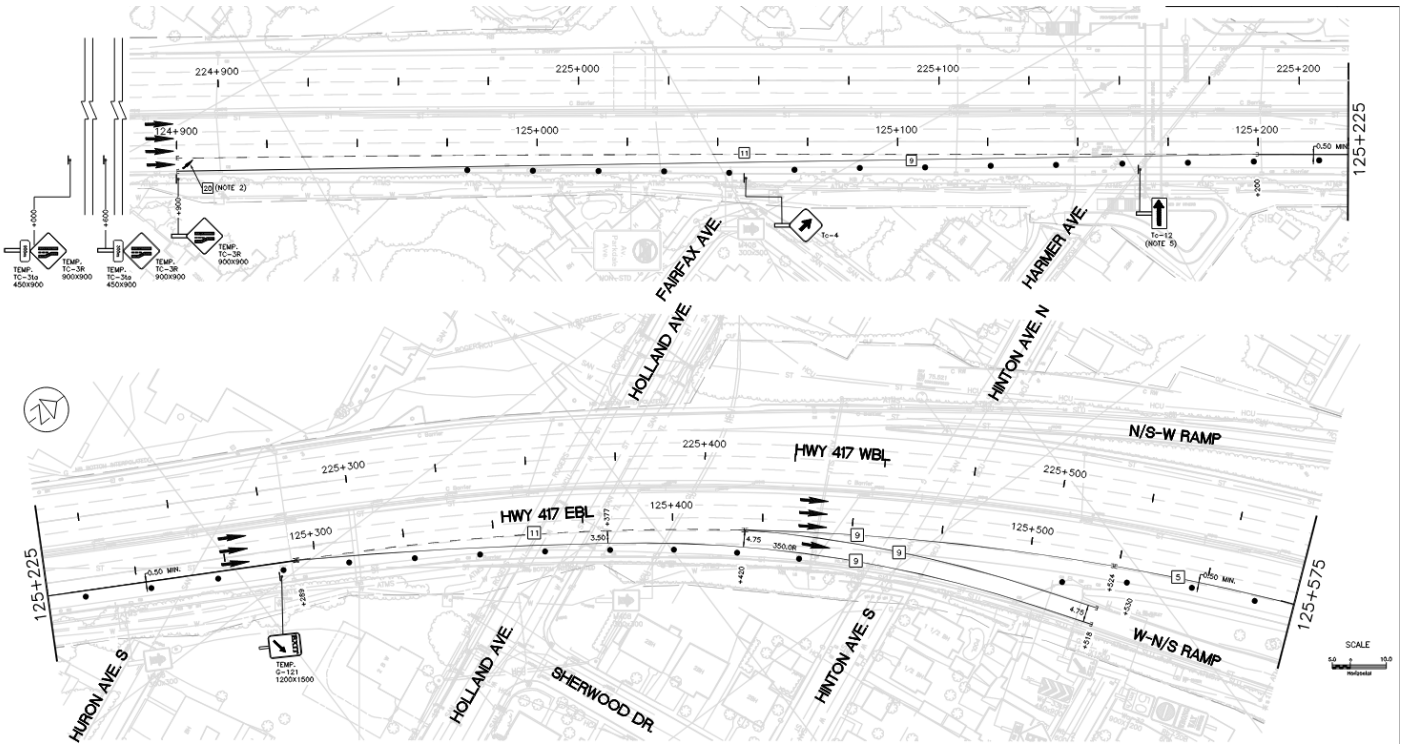
LIMITS OF CONSTRUCTION



**KIEWIT DUFFERIN MIDTOWN PARTNERSHIP
HIGHWAY 417 FROM ISLAND PARK DRIVE TO KENT STREET
MTO CONTRACT NO. GC 2020-4075**



LIMITS OF HIGHWAY 417 EASTBOUND LANE 4 CLOSURE



Marco Trivellizzi – Project Manager
Kiewit Dufferin Midtown Partnership